

# Incentive on Connections Engagement (ICE)



# Contents

Launching our new website	3
Register for policy updates	3
Improving our network	3
Events	4
Register for community energy updates	4
Not sure who to contact?	5
Managing capacity	5
Railway crossing	5

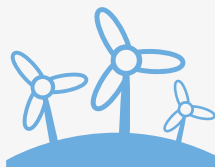
# Summer Update

Welcome to our first 2017-18 connections newsletter, keeping you up to date on our latest news and updates from our Incentive on Connections Engagement (ICE) Work plan.

## View our plans!

Our plans were developed from the feedback you gave us in events and surveys over the year. Our work plans are intended to be fluid, evolving over the year as we engage with stakeholders to make sure that we continue to focus on topics that are important to you.

There's still time to have your say! Take a look at our plans and tell us what you think.



[Distributed Generation proposed work plan 2017-18](#)



[ICP/IDNO proposed work plan 2017-18](#)

“ Ian Greenwood, Business Connections Manager

**We're now working with more Independent Connection Providers than ever before, showing we're facilitating healthy competition in our area and providing a great service to our customers. We need to engage to make sure we continue to support competition and drive improvements in our services.** ”

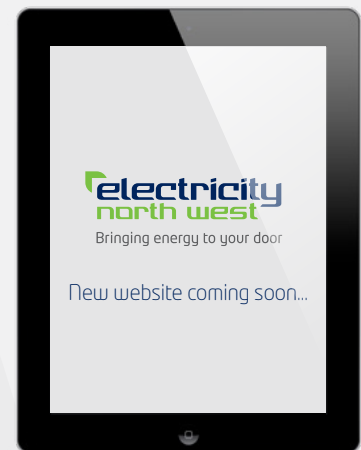


# Launching our new website

We'll be launching our brand new corporate website in autumn. As part of our new website we're building new functionality to make it easier and faster for you to find the information you need, apply and track project progress online. Roll out dates are listed below:

- **Launch of new website and improved navigation – July 2017**
- **Launch of online application for business connections – August 2017**
- **Launch of online tracking for business connections – March 2018**

Our downloadable application forms will still be made available through the website after the launch, and you can still submit applications by emailing us at [connectionapplications@enwl.co.uk](mailto:connectionapplications@enwl.co.uk)



# Register for policy updates

Want to keep up to date with any changes in our policies, engineering standards and specifications? **Sign up** now for our new policy newsletters.

# Improving our network

Everyone accessing and working on the network in the North West has a collective responsibility to ensure that records are as accurate as possible. This doesn't just mean Electricity North West staff and contractors, but also all Independent Connection Providers working in our area. By recording changes accurately on site and submitting them in a timely manner, we all see the benefits:

- **Improved health and safety for all accessing the network**
- **Improved confidence in network records, thereby avoiding delays**
- **Improved experience in determining lowest cost Point of Connection**

Download our handy [guide](#) to keep safe in the van for site visits, or watch our [video](#) online.

# Events

Some of our upcoming events include:

Our 2017-18 events calendar is now available on our website, making it easier for you to book ahead!



Distributed Generation workshop, Preston



Estates and wayleave surgery, Preston



Community energy walking tour, Whalley



Estates and wayleave surgery, Preston

To register for your place please reply to [Rebecca.lees@enwl.co.uk](mailto:Rebecca.lees@enwl.co.uk) and if interested in booking a surgery, please send us your preferred date/location and details of the project and / or general query you would like to discuss.

Keep up to date with all of our planned events and feedback on our [website](#).

## Register for community energy updates

Need to check technical feasibility of a community scheme before you get the community invested?

Our updates can give you tips on how to avoid technical pitfalls when connecting to the electricity distribution network. Signing up can also help you get in touch with our engineers early to avoid potential unanticipated costs and delays later on.

[Sign up](#) now to receive our next newsletter.



# Not sure who to contact?



Last year we re-submitted our ICP/IDNO ICE work plan with an extra action specifically based on feedback we had in our October workshop. You told us that knowing who to contact and having access to phone numbers/ email addresses would be helpful.

Check out our handy list of **contacts for day-to-day queries** you may have.

Thinking of applying for a distributed generation connection but want to ask some questions first? Get in touch and request a call back at [generationenquires@enwl.co.uk](mailto:generationenquires@enwl.co.uk)

## Managing capacity

Please note that if you are applying for a distributed generation quote, your connection will be subject to a number of termination **terms and conditions** associated with the progression of your project. As part of our commitment to manage capacity fairly for all connecting customers, we now request evidence of progression following acceptance of our Connection Offer. These new conditions are in line with the Energy Network Association (ENA) recommendations and intend to reduce the amount of capacity held by non-moving or slow moving projects for the benefit of the wider distributed generation community.



## Railway crossing

Occasionally when designing a new point of connection the easiest or shortest route to join up with our network may appear to involve crossing a network rail asset (i.e. railway tracks or signalling equipment). However, to do so Network Rail requests a Basic Asset Protection Agreement (BAPA) to be signed. Unfortunately the liabilities associated with this agreement present an unacceptable risk to our business. Please note that whilst our legal team negotiate with Network Rail on these terms we will not agree to the BAPA.

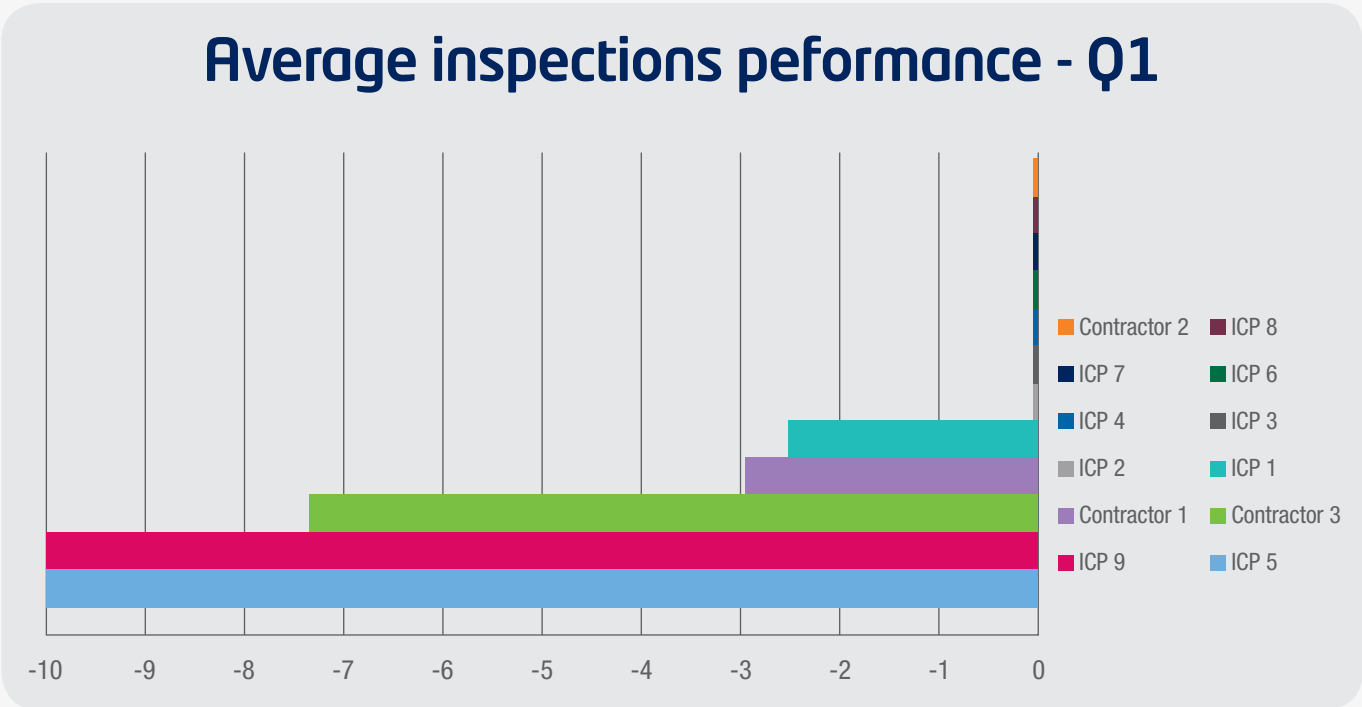
**This applies to all of our connection projects irrespective of type or size of connection.** As a result of these terms, all of our connections are designed and delivered without crossing Network Rail assets.

Independent Connection Providers can choose whether to avoid Network Rail assets in their designs. If they choose not to do so, they will be required to agree to the same liabilities in the BAPA but must also negotiate an acceptable access regime for us to adopt those assets after installation.

To find out more about our policy on this topic please [email us](#).

# Audit performance statistics

We've committed to being open about our audit inspection performance scoring across our contractors and ICPs. Below shows our scores for Quarter 1 2017-18 where a minus score indicates a non-conformity and a zero score indicates no non-conformities upon inspection.



## Our GIS is changing shape

Our regular monthly **GIS** download will be changing format in July 2017. If you are registered to receive these updates we will still send you a link to download our data. However the download will exclude mapping background which means it'll be smaller and possibly quicker to download. We now recommend those using this data to load into QGIS, a free, open source online tool where you can configure your own mapping background to accompany our data.

If you haven't already registered to receive our GIS data, register today to receive your copy.



Bringing energy to your door

## Electricity North West Limited

Registered Office:  
304 Bridgewater Place  
Birchwood Park  
Warrington  
Cheshire  
WA3 6XG

Registered no: 2366949 (England)



Stay connected... [www.enwl.co.uk](http://www.enwl.co.uk) |

