

Nifty lift trailers

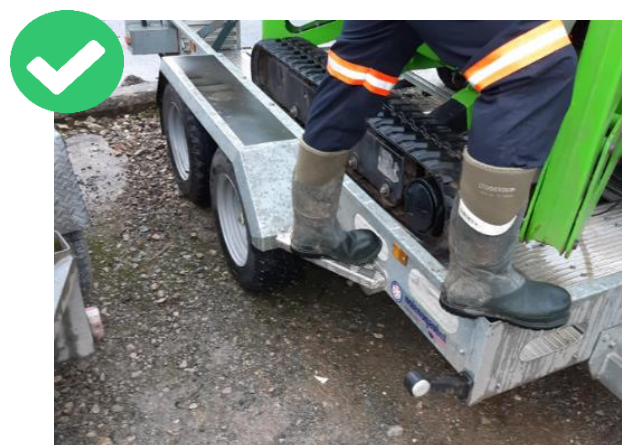
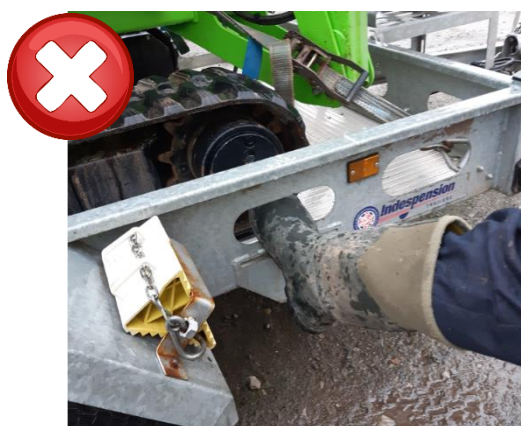
Date:	17/05/2021
Issued by:	Pat Nolan, Transport Manager
Applicable to	All operational colleagues and contractors

Recently details were shared of an incident involving a colleague who suffered a fractured collar bone after falling backwards stepping down from a nifty lift trailer.

The colleague had stood on the side of the trailer to load equipment into the nifty lift bucket. When stepping down, the right foot was in a gap on the side of the trailer and left foot on the ground. During the manoeuvre the right foot became stuck in the gap and the individual fell backwards onto the ground with their right foot still stuck in the gap.

Following an investigation, we can share some of the outcomes below:

- Wherever possible items should be loaded/unloaded when the nifty lift is positioned on the ground and not when sat on the trailer. Tools and equipment should not be loaded into the bucket before transporting to site.
- If it is necessary to access the bucket when the nifty lift is sat on the trailer, access should be made using the step on the left side of the trailer (looking from the rear).
- Access must not be made using the prefabricated holes on the side of the trailer. These are designed to reduce the weight of the trailer and are not footholds.



Key points to remember:

- Always report incidents at the time they occur.
- Do not take short cuts – stop, think and plan your activity.
- Do not use things contrary to their intended purpose.

