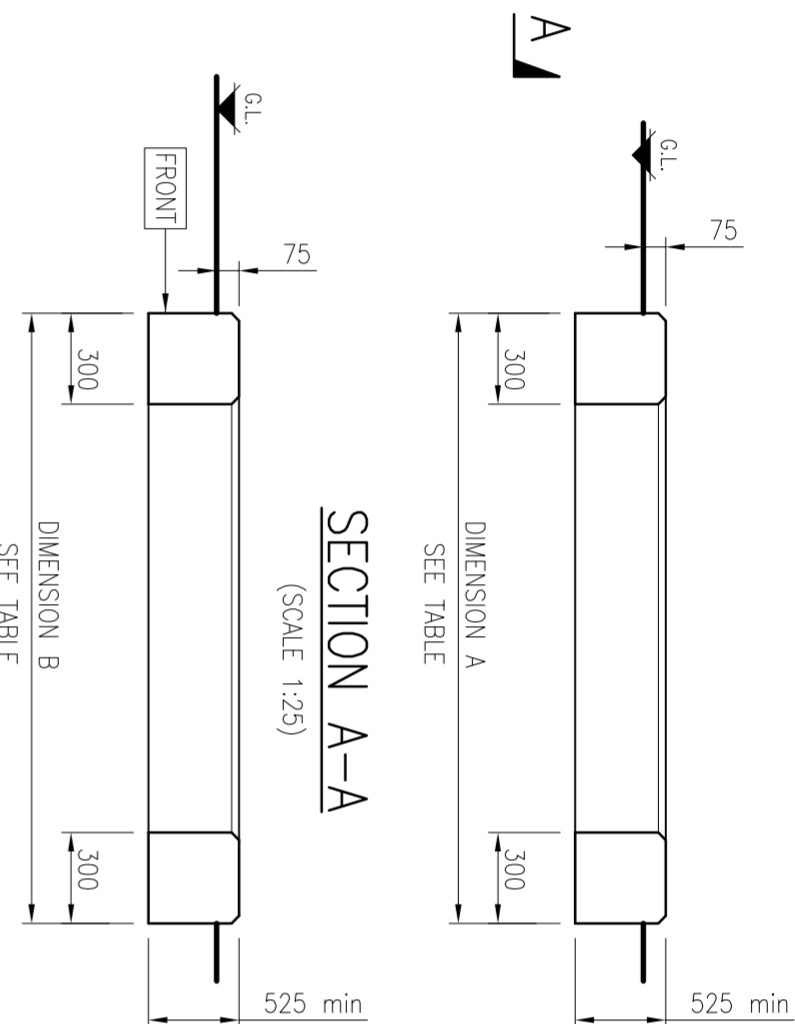


PLAN ON RING BEAM
(SCALE 1:25)

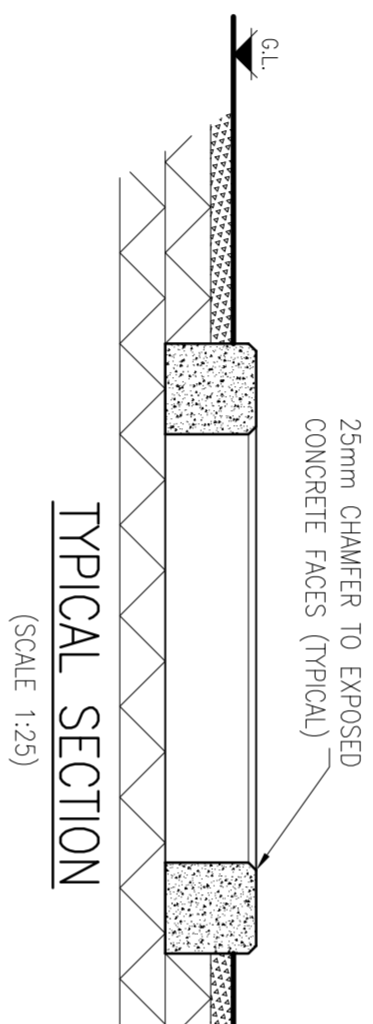
H10.01.LINKS. 150c/c

GRP UNIT DIMENSION VARIATION TABLE			
PLANT TYPE	DIMENSION A	DIMENSION B	BENDING SCHEDULE No
GRP FOR 14GF.3 AND 14GF.3RMU	2950mm	2850mm	001
GRP FOR SCHNEIDER EXTENSIBLE SWITCHGEAR	4500mm	3750mm	002
GRP FOR LUCY SABRE SWITCHGEAR	3250mm	3350mm	004

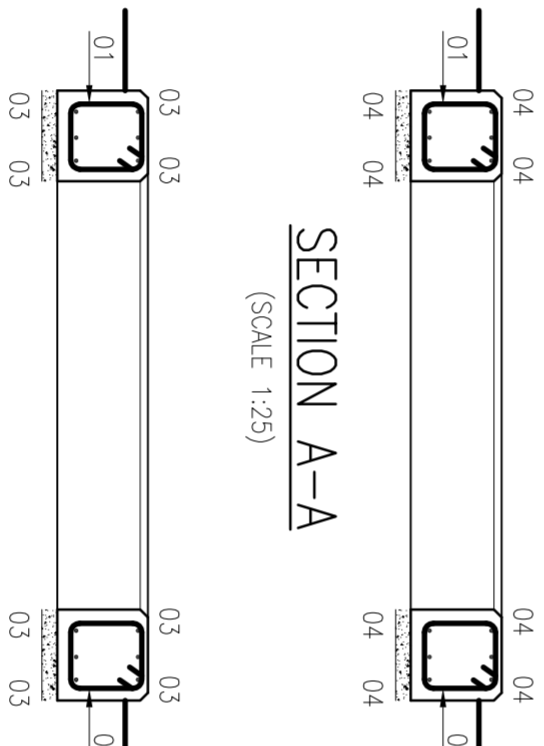


SECTION A-A
(SCALE 1:25)

SECTION B-B
(SCALE 1:25)

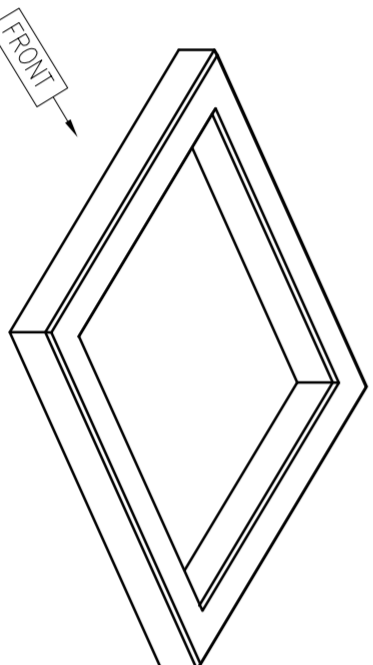


TYPICAL SECTION
(SCALE 1:25)



SECTION A-A
(SCALE 1:25)

SECTION B-B
(SCALE 1:25)



ISOMETRIC VIEW
(SCALE 1:50)

NOTE
THE EARTHING TAPE IS ATTACHED TO THE MAIN REINFORCEMENT AND ROUTED TO EMERGE FROM THE INTERNAL FACE OF THE FORMWORK FOR THE FUTURE CONNECTION TO THE SWITCH HOUSE EARTHING SYSTEM. UNDERTAKEN PRIOR TO COMMENCEMENT OF ANY WORKS.

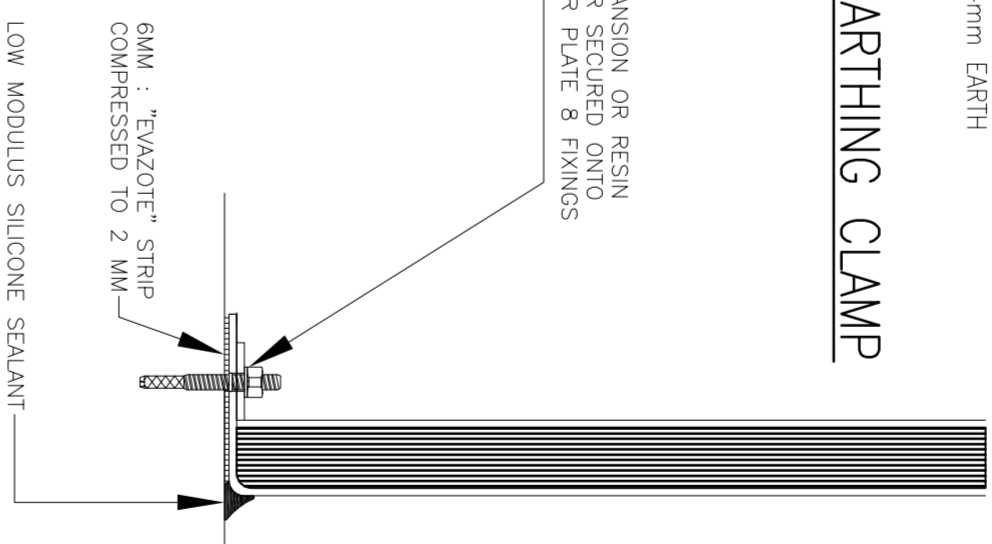
CLAMPED CONNECTION WRAPPED WITH DUCK TAPE PRIOR TO POURING CONCRETE



U BOLT CLAMP, 25mm ROD DIA. TWIN PLATE, 25x3, BY OMEGA (TEL. No 0115 8767689) TO ACCOMMODATE A 25x4mm EARTH TAPE.

DETAIL OF REINFORCEMENT/EARTHING CLAMP
(SCALE 1:5)

M12 ANCHOR BOLT EXPANSION OR RESIN TYPE TO INCLUDE WASHER SECURED ONTO ENCAPSULATED TYPE 1 MATERIAL PER GRP UNIT.



G.R.P. FIXING DETAIL
(SCALE 1:10)

BENDING SCHEDULE TO BS 8666:2005

Bar mark	Type & size	No. of mbrs	No. of bars in each	Total no.	Length of each bar + mm	Shape code	A * mm	B * mm	C * mm
BS No. 001									
01	H10	1	70	70	1450	51	215	440	
02	H12	1	48	48	1075	11	720	375	
03	H12	1	12	12	2300	00	2300		
04	H12	1	12	12	2200	00	2200		
BS No. 002									
01	H10	1	102	102	1450	51	215	440	
02	H12	1	48	48	1075	11	720	375	
03	H12	1	12	12	3850	00	3850		
04	H12	1	12	12	3100	00	3100		
BS No. 004									
01	H10	1	80	80	1450	51	215	440	
02	H12	1	48	48	1075	11	720	375	
03	H12	1	12	12	2600	00	2600		
04	H12	1	12	12	2700	00	2700		

† Specified in multiples of 25mm

* Specified in multiples of 5mm

SITE NOTES

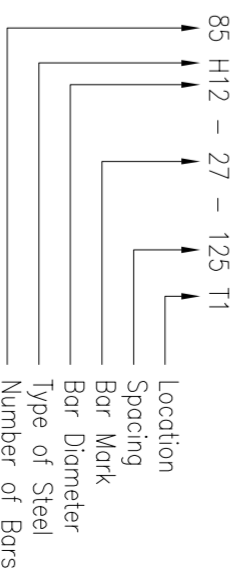
- CONTRACTOR TO OBTAIN UNDERGROUND CABLE & SERVICE RECORDS PRIOR TO COMMENCEMENT OF ANY WORKS.
- THE CONTRACTOR MUST ASSUME THAT ANY EXISTING CABLES LOCATED WITHIN THE WORKS ARE LIVE AND LAISE WITH THE ELECTRICITY NORTH WEST ENGINEER FOR ADVICE.
- SITE SPECIFIC RISK ASSESSMENT TO BE UNDERTAKEN PRIOR TO COMMENCEMENT OF ANY WORKS.
- FOUNDATION DESIGN HAS BEEN BASED ON A SUITABLE BEARING PRESSURE FOR MOST GROUND CONDITIONS INCLUDING CLAYS. FORMATION LEVEL FOR FOUNDATIONS TO BE TAKEN DOWN TO GROUND THAT IS SUFFICIENTLY FIRM TO PROVIDE PHYSICAL SUPPORT TO THE STRUCTURE.
- FOUNDATION FORMATION LEVELS TO BE INSPECTED AND APPROVED PRIOR TO FOUNDATION CONSTRUCTION.
- B.S. PIN KERB 250mm x 50mm WITH CONCRETE SURROUND TO BE PLACED AT FRONT EDGE OF THE CABINET.

GENERAL NOTES

- DO NOT SCALE.
- ALL DIMENSIONS ARE IN MILLIMETRES UNLESS NOTED OTHERWISE.
- THIS DRAWING IS TO BE READ IN CONJUNCTION WITH ELECTRICITY NORTH WEST CODE OF PRACTICE ESS352
- ALL WORK TO CARRIED OUT IN ACCORDANCE WITH CURRENT BUILDING REGULATIONS AND RELEVANT BRITISH STANDARDS AND CODES OF PRACTICE.

REINFORCEMENT NOTES

- Concrete to be strength class C32/40 to BS 8500.
- Loose bar reinforcement to have the following minimum lops UNO:
 - H10 = 350mm
 - H12 = 420mm
- Standard A393 fabric mesh to have a minimum lopp of 270mm.
- 40mm cover to all reinforcement UNO.
- Bar references shall be interpreted thus:
 - BS H12 - 27 - 125 T1
- Locations:
 - T1 Denotes Top face, top layer
 - T2 Denotes Top face, second layer
 - B2 Denotes Bottom face, second layer
 - B1 Denotes Bottom face, bottom layer
- "H" Denotes deformed Type 2 high yield steel bars to BS 4449:2005 - characteristic yield strength 500MPa.



		FREDERICK ROAD, SALFORD M6 6QH TEL 0161 6041370		CIVIL DISTRIBUTION SUBSTATION TYPICAL RING BEAM FOUNDATION FOR GRP HOUSINGS	
DRAWN	PK	SCALE	AS SHOWN	SITE NAME	-
APPROVED	WD	DATE	SEPT 2013	P.F.R. NO.	-
OLD DWG NO	-	SHEET SIZE	A3	DWG NO	900350-013
				REV	1